

EasySCADA

SCADA- remote maintenance with GO WirelessConnect
via GPRS UMTS LTE



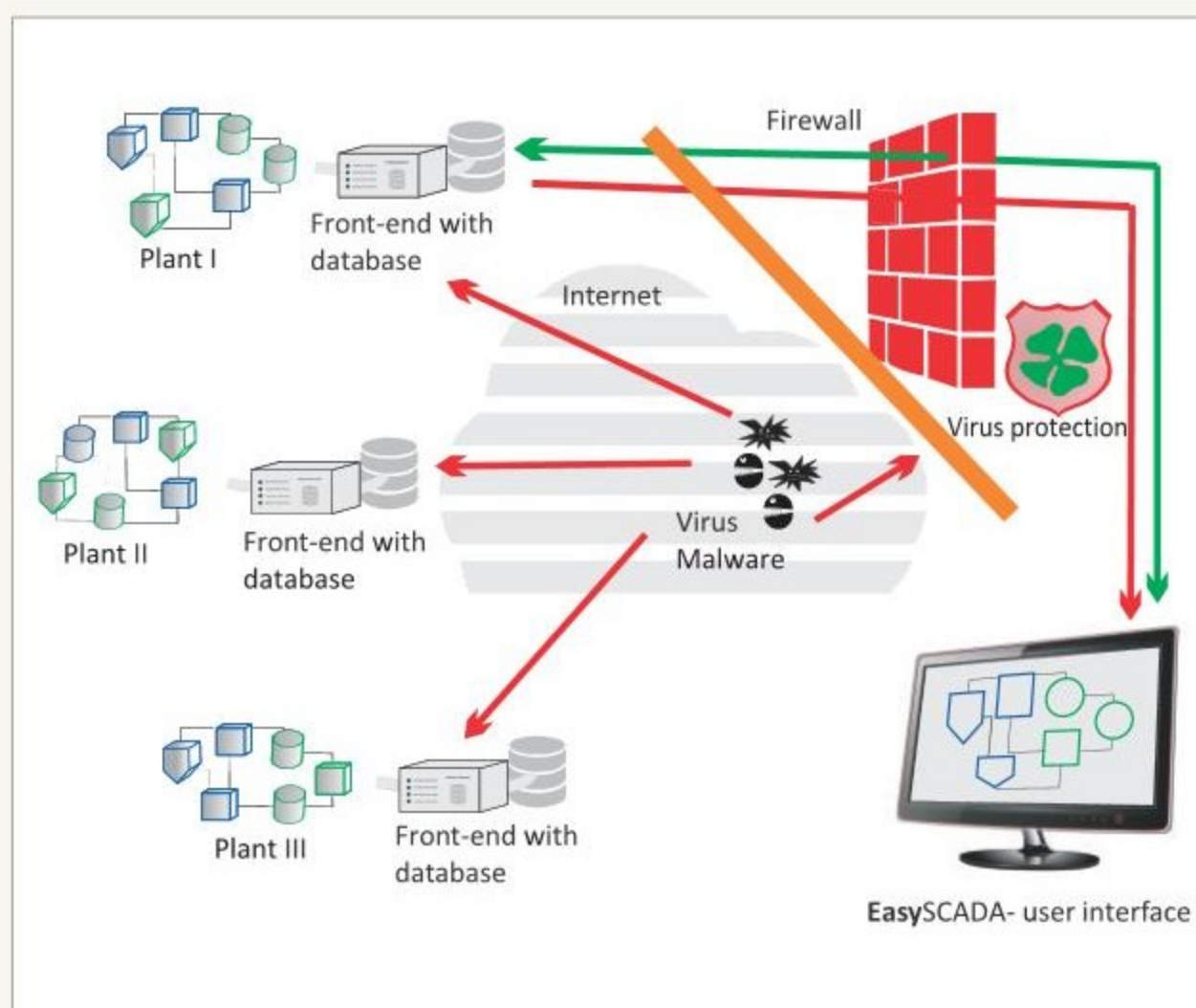
- ▶ **Understandable telecontrol and remote maintenance technology** allows a simple acquisition of plant data, convincing visualization and secure archiving
- ▶ **Modular construction** allowing a high flexibility during measured value acquisition and system control. Easy adaptation to the task is possible at any time
- ▶ **Transparent layer technology** for minute-fast configuration and individual design of the user interface
- ▶ **100 % IT security** because an unauthorized access at the GO WirelessConnect front-end is impossible. No security vulnerability and no software updates
- ▶ **Simple, uncomplicated and safe:** Everyone is able to set up and use EasySCADA

1

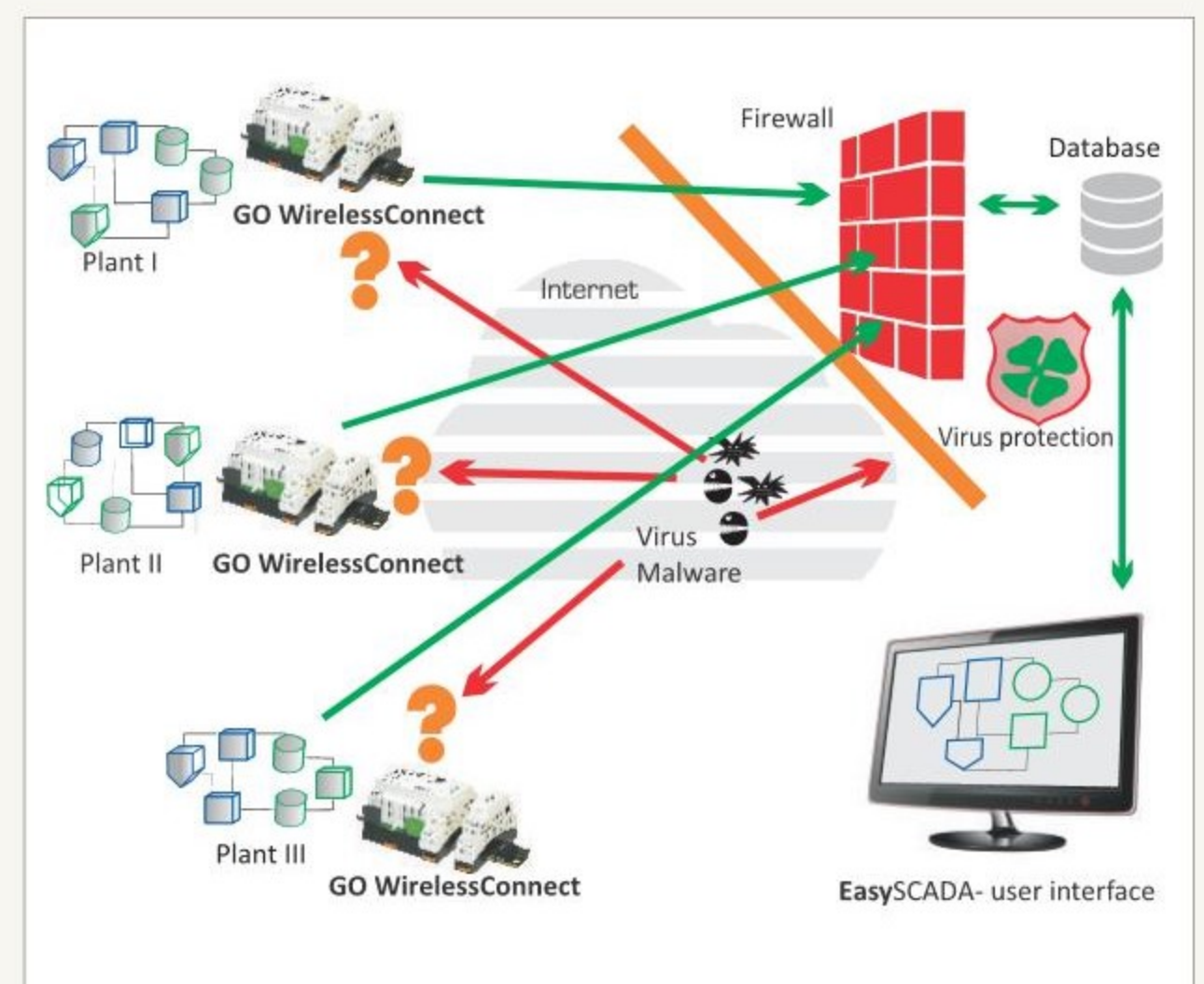
Choose GO WirelessConnect Hardware

The **GO WirelessConnect-central** is prepared to be mounted on 32mm DIN-rail. It contains the central components for power supply and communication via wireless internet. With up to **12 additional modules** it's possible to choose the configuration that is best-suited for the desired task of measurement and control. Modules for sensors with switching function or analog output signal are available as well as modules for switching tasks (remote control). Project-related extensions and changes in the combination of the modules are possible at any time. With the modular concept you stay flexible for solving any task!

- ▶ Plant specific, individual selection of the GO-modules according to the telecontrol task which has to be solved
- ▶ Power supply and communication for all modules by the system bus that is integrated in the DIN-rail
- ▶ Functional diversity through a large range of modules, which is extended permanently
- ▶ Flexible adaptation to the measuring task is possible at any time



Malware is attacking permanently the front-end systems (e.g. LINUX-based) that are common in remote-control technology. Very often these are inadequately secured (no virus protection, no safety updates). **This puts the whole system at risk!**



The **GO WirelessConnect**- front-ends have an unchangeable software. Any malware is ignored. From the outside no access to the internal data is possible. The security concept is inherent, because what is impossible will never happen.

2

Simple and convincingly safe: The EasySCADA database

GO WirelessConnect transmits at fixed time intervals and additionally with every change of a sensor status messages of the system and the values of the measuring sensors to the central **EasySCADA** data-base. From there the front-end also gets the commands for switching tasks which have to be executed.

In telecontrol applications the front-end- systems have to be included into the data safety concept. The efforts for IP-SEC, VPN, security updates and secure authentication always is very high – and in many cases too much of the user. The paths of malware in many cases lead over front-end systems that are protected insufficiently directly into the central of the SCADA system.

In contrast, the **EasySCADA** front-end is not reachable viruses and malware! For the user this means the invaluable advantage that no backdoor for data espionage and malicious attacks via the internet is available. Solely the GO central with the **EasySCADA**- database has to be protected with the tools of modern IT- security.

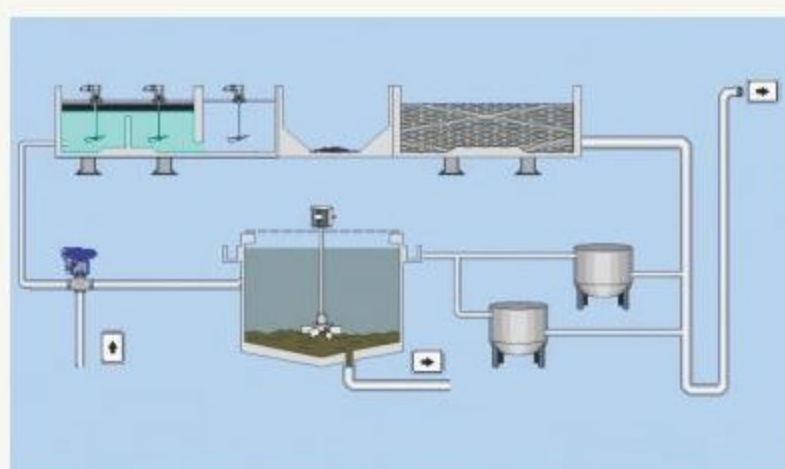


3

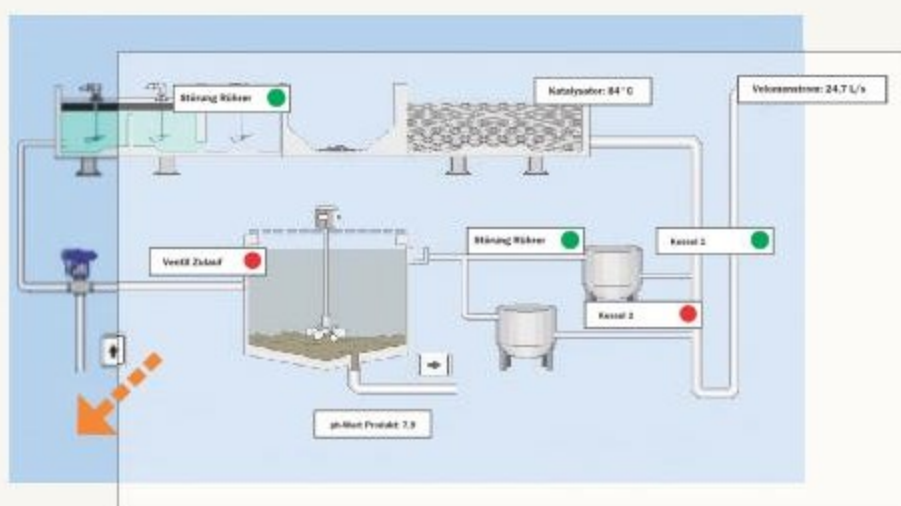
Create SCADA- user interface with EasySCADA

Setting up a SCADA system usually requires special knowledge and complex software. Using **EasySCADA**, the user interface of **GO WirelessConnect**, it is different. A system diagram of the plant or a photo represents the entire system. The symbols of all sensors and switch actuator are arranged on a transparent level, the transparent layer. A doubleclick on the sensor or actuator opens the element. The table of measurement values and the history graphs from the database are accessible.

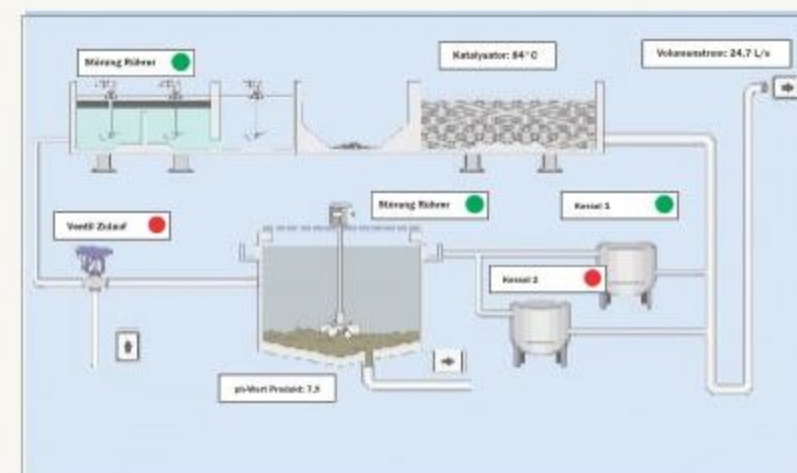
- ▶ A system diagram of the plant forms the visual layer of the user interface
- ▶ On the transparent layer each sensor and actuator is positioned by the user
- ▶ The transparent layer shows the current measured values and the system status
- ▶ A double click on the display element allows the access to the database of values and history graphs



The system diagram as an image file



The transparent-layer is placed over it



The whole EasySCADA- system is ready

4

SCADA- Use remote control at any time and export data











Using **GO WirelessConnect** you never transfer any data to the front-end- system, because this would make it accessible to attacks of any kind from the internet. In addition, common SCADA- systems carry out a lot of tasks directly on the front-end- system. Again and again unnecessarily large amounts of data (web- pages, screen backgrounds, table-frames, etc.) are transferred.

With **EasySCADA** you are able to archive the same result without any user-related data traffic to the central database of the **EasySCADA**- system. In this database the whole information of all front-end- systems is stored safe from manipulation and data loss. As well your data are faster accessible than usual.

- ▶ Central administration of user rights
- ▶ Alerting in case of system failure by e-mail, SMS, etc.
- ▶ Create history charts and tables. Data export, e.g. to Excel™

EasySCADA GO-Centralunit, GO-Modules and accessories

Specification, technical data and ordering information

device designation		characteristics	order number
GO-Centralunit <i>blueline</i>		GO-Centralunit (10-36 V DC) GSM transmitting and receiving unit IP 34 casing for 32 mm DIN-rail up to 12 GO-Modules can be connected	700300101
GO-Digital in <i>blueline</i>		expansion module with 8 digital inputs for potential free switch contact switching condition: closing contact	700300111
GO-Digital in <i>blueline</i> Invert		expansion module with 8 digital inputs for potential free switch contact switching condition: opening contact	700300112
GO-Digital in <i>blueline</i> opto-isolated		expansion module with 4 digital inputs for switching voltages	700300134
GO-Digital out <i>blueline</i>		expansion module with 4 digital switching outputs Relay with changeover contact (NO C NC) for max. 24V, 1A (AC/DC)	700300121
GO-Digital out <i>blueline</i> 230V		expansion module with 2 digital switching outputs Relay with changeover contact (NO C NC) for max. 230V, 6A (AC/DC)	700300122
GO-Analog in <i>blueline</i> 0-1V		expansion module with 4 analog inputs for sensors and analog signals 0-1V (input resistance 100 kΩ)	700300132
GO-Analog in <i>blueline</i> 0/4-20mA		expansion module with 4 analog inputs for sensors and analog signals 0-20mA (input resistance 500 Ω)	700300133
GO-cable USB		Cable for parametrizing the GO-central unit for USB 1.1 and higher	700300150
GO-cable RS 232		Cable for parametrizing the GO-central unit for RS 232 / V24	700300151

Antennas, sensors and additional accessories for GO WirelessConnect are available.